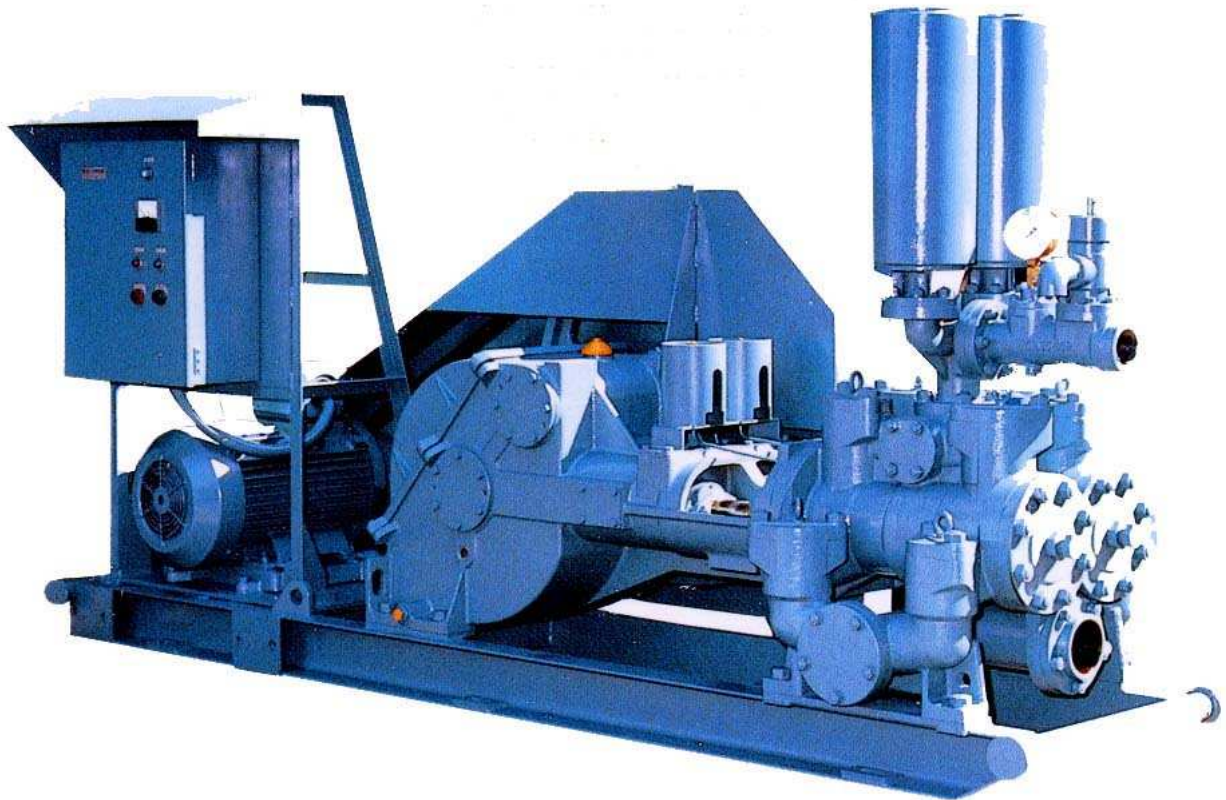


**DRILLING FLUID CIRCULATION & GROUT PUMP**

# **NP-700**



**"NP" SERIES HEAVY DUTY PUMP DESIGNED FOR WIDER DRILLING APPLICATIONS IN MINING, DEEP WATER WELL AND CONSTRUCTION FIELDS REQUIRING HIGH PRESSURE AND LARGER DISCHARGE VOLUME WITH RELIABLE PERFORMANCE**

## SPECIFICATIONS FOR NP-700 PUMP (STANDARD TYPE)

Type . . . . . Duplex double acting piston.

Cylinder bore (mm) . . . . .	140(5-1/2")		127(5")		114(4-1/2")		102(4")		89(3-1/2")	
Discharge volume (L/min) . . . . .	730	615	600	505	480	405	375	315	280	235
Max. pressure (kg/cm2) . . . . .	19	22	23	27	29	34	37	43	49	58
No. of strokes . . . . .	95	80	95	80	95	80	95	80	95	80
Revolution of driving . . . . .	470	395	470	395	470	395	470	395	470	395
Shaft (rpm)										

Length of stroke (mm) . . . . . 130

Type of valve . . . . . Ball or conical

Suction hose size (mm) . . . . . 100 or 75

Delivery hose size (mm) . . . . . 65 or 50

Required input (kW) . . . . . 30 – 4P

Weight (w/o power unit) (kg) . . . 1,600

Dimensions (mm) . . . . . 3,040 (L) x 830 (W) x 1,575 (H) (with electric motor)

## SPECIFICATIONS FOR NP-700 PUMP (TRANSMISSION TYPE)

Cylinder bore (mm)	140 (5-1/2")				127 (5")				114 (4-1/2")				102 (4")				89 (3-1/2")				
	High		Low		High		Low		High		Low		High		Low		High		Low		
Revolution of driving shaft (rpm)	Q		P		Q		P		Q		P		Q		P		Q		P		
Discharge (Q:L/min) & Pressure (P: kg/cm2)	Q	P	Q	P	Q	P	Q	P	Q	P	Q	P	Q	P	Q	P	Q	P	Q	P	
Gear shift of transmission	5	735	19	615	22	605	23	505	27	485	29	405	34	375	37	315	43	280	49	235	58
	4	520	22	435	22	425	27	355	27	340	34	285	34	265	43	220	43	200	58	165	58
	3	315	22	265	22	260	27	215	27	205	34	175	34	160	43	135	43	120	58	100	58
	2	175	22	145	22	140	27	120	27	115	34	95	34	90	43	75	43	65	58	56	58
	1	105	22	85	22	85	27	70	27	70	34	59	34	54	43	46	43	41	58	34	58

\* Indicated data are theoretical.

Remarks: We have the right to change the specifications without prior notice for continuous improvement.

**TOA-TONE BORING CO., LTD.**

3-7 Roppongi 7-chome, Minato-ku, Tokyo 106-0032, Japan

Phone: 03-5775-3921 Fax: 03-5775-3967

ULR: <http://www.toa-tone.jp>

**PT. DJAWA BARU**

Jl. Prof. Dr. Soepomo, SH. 45F Jakarta 12810, Indonesia

Phone: +62-21-829-8401 / +62-852-1679-9191

HP: +62-852-1679-9191 Email: [support@djawabaru.co.id](mailto:support@djawabaru.co.id)